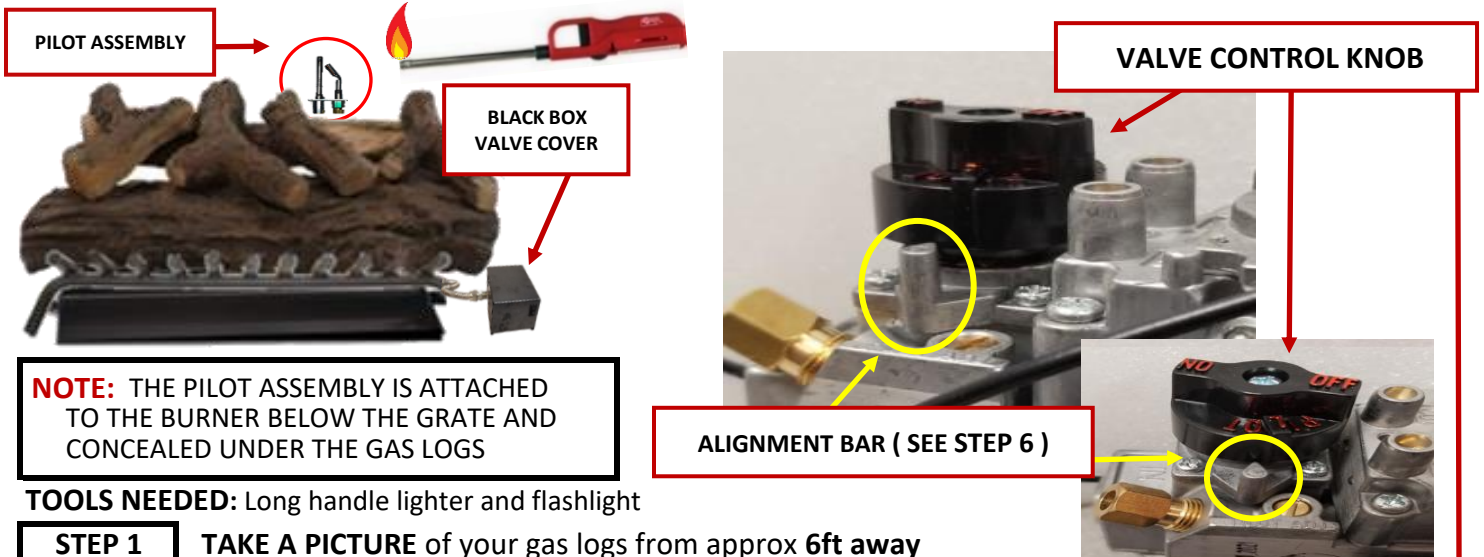


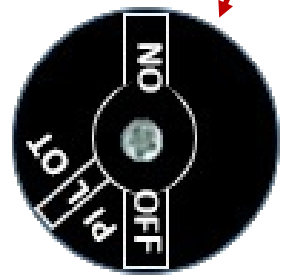
# STANDARD CAPACITY MILLIVOLT VALVE PILOT LIGHTING INSTRUCTIONS



**NOTE:** THE PILOT ASSEMBLY IS ATTACHED TO THE BURNER BELOW THE GRATE AND CONCEALED UNDER THE GAS LOGS

**TOOLS NEEDED:** Long handle lighter and flashlight

- STEP 1** TAKE A PICTURE of your gas logs from approx 6ft away  
This will CAPTURE the ORIGINAL PLACEMENT of your gas logs
- STEP 2** LOCATE the black box valve cover next to the gas logs.
- STEP 3** CAREFULLY lift the black box off the valve, set aside
- STEP 4** CAREFULLY lift off a few (2, 3 or 4) of the top logs so you can see the PILOT ASSEMBLY
- STEP 5** LOCATE the black VALVE CONTROL KNOB on the valve
- STEP 6** ROTATE the CONTROL KNOB **CLOCKWISE** until "**PILOT**" LINES UP with the ALIGNMENT BAR, then depress the CONTROL KNOB  
• SEE ALIGNMENT BAR ILLUSTRATION •
- STEP 7** KEEP THE CONTROL KNOB DEPRESSED FOR 60 - 90 SECONDS AS YOU LIGHT THE PILOT WITH A LONG HANDLE LIGHTER
- STEP 8** When you see a **SMALL BLUE FLAME**, extinguish the lighter, but CONTINUE TO DEPRESS THE VALVE CONTROL KNOB
- STEP 9** After 60 to 90 seconds **RELEASE THE VALVE CONTROL KNOB.**  
(A SMALL BLUE FLAME FROM THE PILOT ASSEMBLY WILL CONTINUE TO BURN)
- STEP 10** TO START THE GAS FLOW to the gas logs, ROTATE the VALVE CONTROL KNOB **CLOCKWISE** until "**ON**" LINES UP with the ALIGNMENT BAR
- STEP 11** RETURN YOUR GAS LOGS to their original placement using the earlier captured photo
- STEP 12** TO SHUT OFF THE GAS FLOW to the fireplace, ROTATE the VALVE CONTROL KNOB **COUNTER CLOCKWISE** until "**OFF**" LINES UP with the ALIGNMENT BAR



IF THE PILOT FAILS TO LIGHT, REPEAT STEPS 5 THRU 10

## WARNING:

- GLASS DOORS AND DAMPER MUST BE OPEN DURING MAIN GAS LOG BURNER OPERATION
- THE PILOT CAN GO OUT DUE TO DOWNDRAFTS AND/OR GAS PRESSURE FLUCUATIONS
- NEVER THROW COMBUSTIBLES ON GAS LOGS (PAPER, TRASH, KINDLING, ECT)